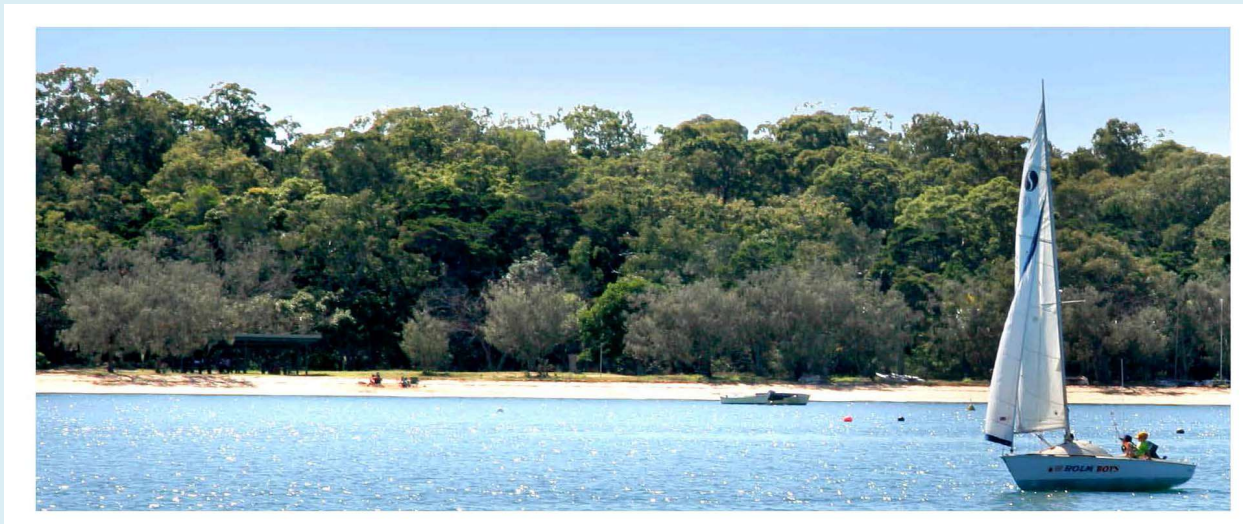
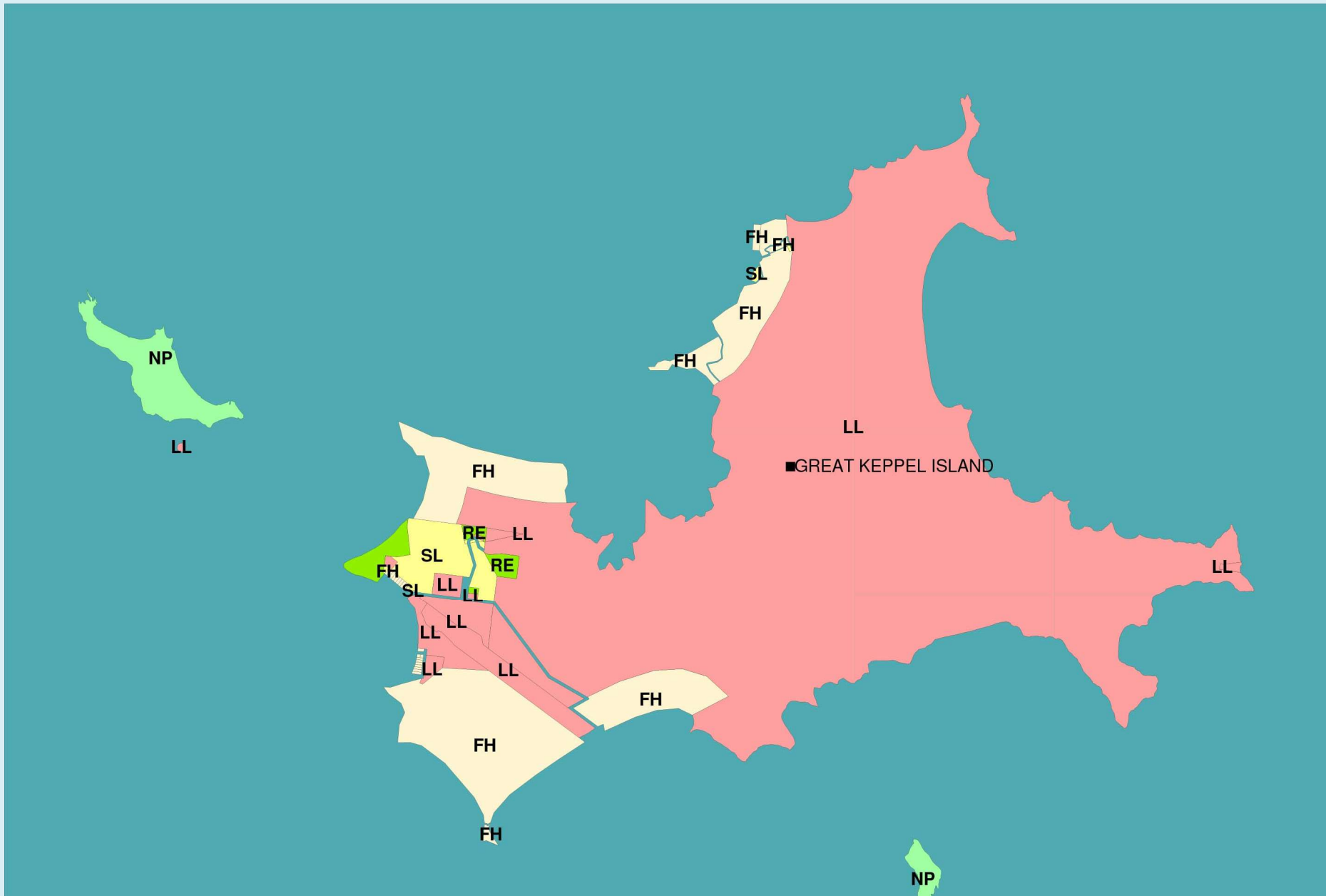


Coochiemudlo Island Heritage Society



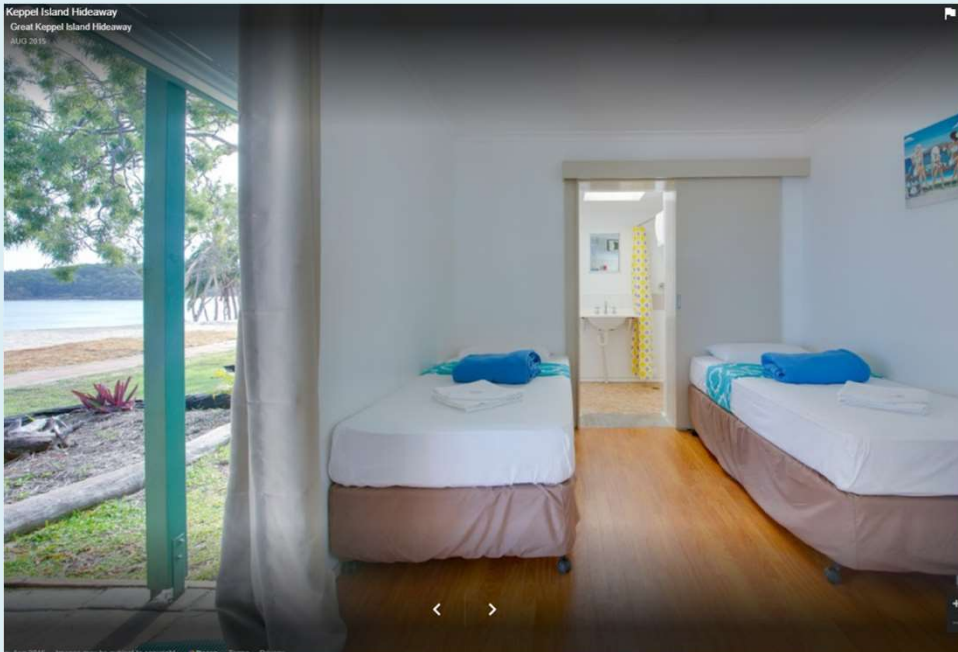
Application for the entry of the
'Emerald Fringe' of Coochiemudlo
Island in the Queensland Heritage
Register





Great Keppel Island Hideaway
Great Keppel Island Hideaway
MAR 2016

Great Keppel Island Hideaway Resort



Keppel Island Hideaway
Great Keppel Island Hideaway
AUG 2015





An artist's impression of the proposed Great Keppel Island redevelopment. SMH 4.9.18

Photo: Supplied

Coochiemudlo



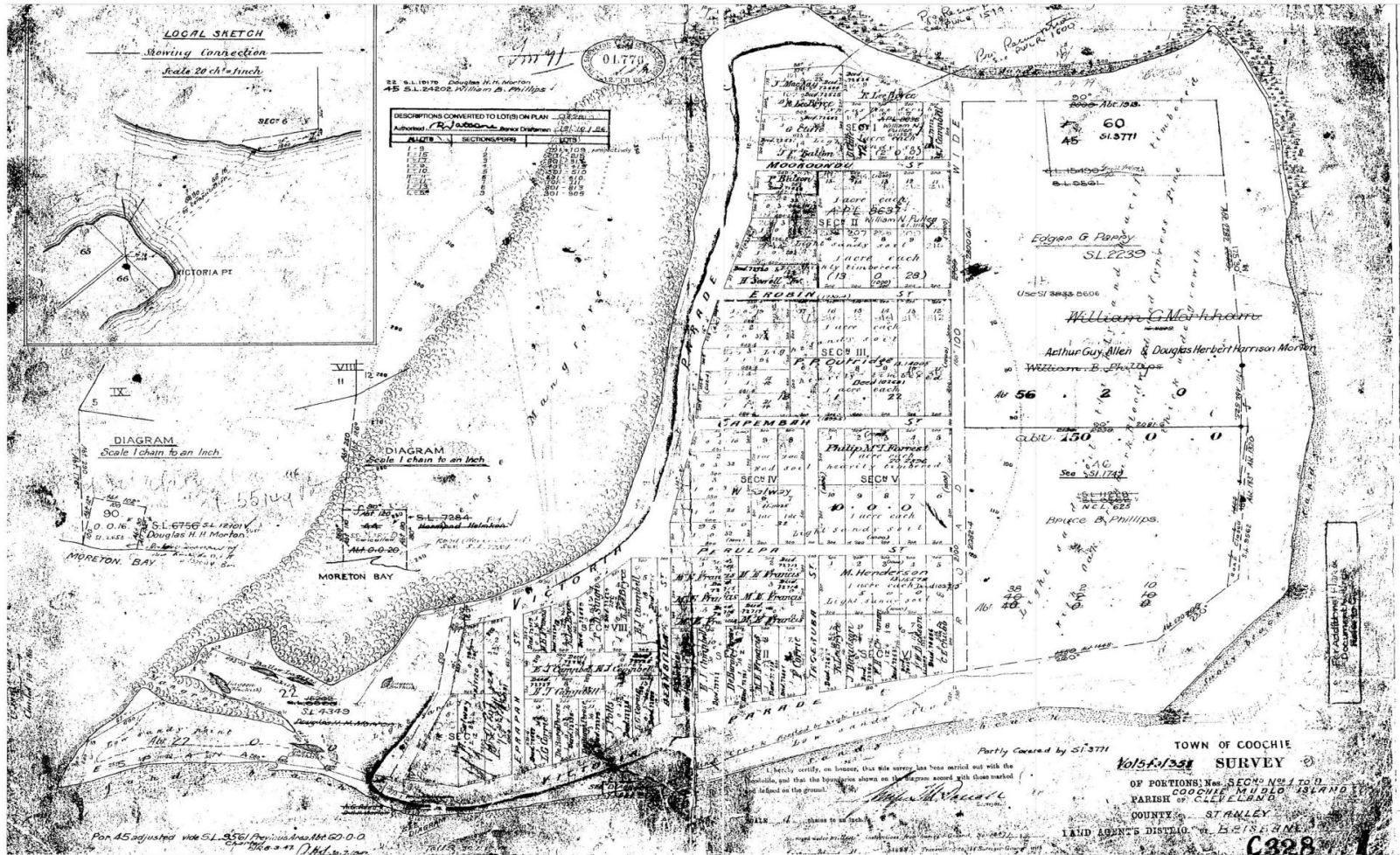
Factors endangering the Emerald Fringe

- The closest sandy beaches to Brisbane, Logan City and Redland City
- Mainland population of more than 2.6 million people
- Toondah Harbour and Shoreline developments
- Growth in visitor/vehicle numbers

Approximately 80% of Queenslanders live on the coast. In addition, it draws significant numbers of visitors that serve to increase demand for access infrastructure and accommodation. Where not sensitively managed, these pressures may undermine the values which draw such visitation numbers and development in the first place.

The origins of the Emerald Fringe

Attachment #3 Original survey plan showing esplanade reserve



Survey of the Town of Coochie
12th February 1886
C3281 held in Titles Office, Brisbane

TOWN OF COOCHIE

PARISH OF CLEVELAND

COUNTY OF STANLEY

LAND AGENTS DISTRICT OF BRISBANE

Scale of Chains



Drawn and Published at the Survey Office, Dept. of Public Lands Brisbane, July 1861
Printed at the Govt. Printing Office, Prince & Alfred St.

Half acre blocks of 640 sq. ft. (or of the 1/4 acre)
1/2 Acre 1280 sq. ft. (or of the 1/2 acre)
1 Acre 2560 sq. ft. (or of the 1 acre)
2 Acres 5120 sq. ft. (or of the 2 acres)
3 Acres 7680 sq. ft. (or of the 3 acres)
4 Acres 10240 sq. ft. (or of the 4 acres)
5 Acres 12800 sq. ft. (or of the 5 acres)
6 Acres 15360 sq. ft. (or of the 6 acres)
7 Acres 17920 sq. ft. (or of the 7 acres)
8 Acres 20480 sq. ft. (or of the 8 acres)
9 Acres 23040 sq. ft. (or of the 9 acres)
10 Acres 25600 sq. ft. (or of the 10 acres)

Reference to local Proclamation Descriptions

Subdivisions indicated thus: (A)

Resubdivisions - (B)

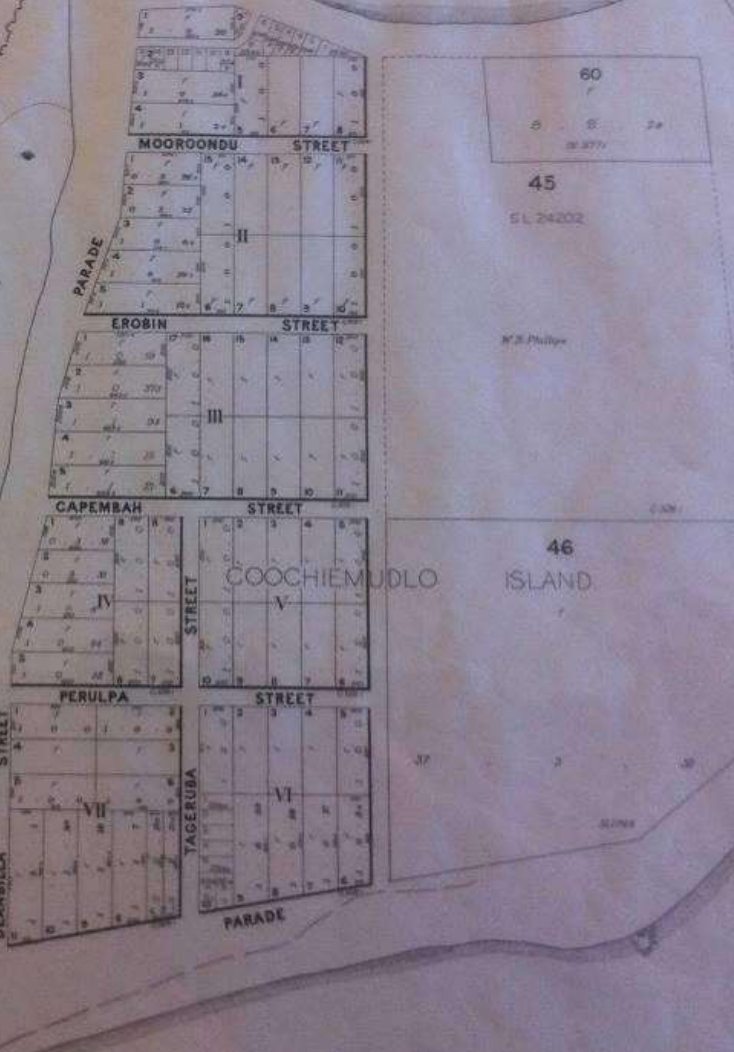
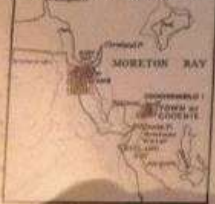
Sections - (C)

Chains - (D)

CROWN COPYRIGHT RESERVED

LOCAL SKETCH

Scale 2 Miles to an Inch



1/2 21/10
1961

Public space



Overwhelming community support

- No submissions opposing the application
- Every Island community organisation wrote letters of support
 - Coochie Art Group
 - Coochiemudlo Island Bushcare group
 - Coochiemudlo Island Coastcare
 - Isle of Coochie Golf Club
 - Coochiemudlo Island Native Nursery
 - Outriggers Club
 - Coochiemudlo Island Pirates Club
 - Coochiemudlo Island Progress Association
 - Coochiemudlo Island Recreation Club
- 57 submissions of support in total

Further Support

- Deputy Mayor of Redlands Councillor Lance Hewlett
- Kim Richards MP for Redlands
- Redland City Council 'applaud and respect the efforts of the Coochiemudlo Island Heritage Society ...in making the application' and are willing to negotiate a 'Heritage agreement'.

Part of our heritage





Michael Burge

Thank you

Coochiemudlo Island
Heritage Society